

# Excellence in Energy

December's Open Community meetings  
at Kapuni and Tikorangi regrettably cancelled

## Community Update

Issue 31, December 2021



The Todd Energy-sponsored Taranaki Surf Rescue Squad jet ski with the crew.

## HELLO FROM TODD ENERGY...

Hello everyone and welcome to our final community newsletter for 2021. This year has been a challenging one for many of us, with the global Covid-19 pandemic continuing and New Zealand's response ongoing.

As with many of New Zealand's businesses, Todd has faced some operational challenges this year including, of course, the August lockdown period. Despite that, we have also achieved and been part of many successes, just a few of which are shared in this newsletter.

At Kapuni we have drilled and completed two wells of our four-well Kapuni J drilling campaign. The third well is due for completion in early December and the fourth well in January. Both wells achieved good results and are scheduled to start production in January, with the final two wells likely to be online at the end of the first quarter of next year. On the environmental front, we completed native planting around the Kapuni J and KA-9/16 wellsites and are conducting remediation of the erosion at the Kapuni Stream caused by the large flood in July.

The McKee Mangahewa Production Station (MMPS) has had a relatively quiet quarter, with planned maintenance and upgrades the focus of work.

As outlined later in this newsletter, our journey towards a low emissions future continues, with work underway on the electrification of compression at the Mangahewa C and D wellsites. As part of reducing our emissions, we are moving

to electronic deliveries and posted messages for stakeholder notifications, resident updates and the like, rather than the traditional letter drops via vehicle. Please bear with us while we embed these changes.

We recently farewelled Jane Snowden, General Manager of People and Community, who retired in September. After seven years here at Todd, and a career spanning 24 years in Taranaki, Jane is planning on spending quality time with her whānau. I would like to wish Jane all the best and a very happy retirement. Taking over from Jane is David Bradley, General Manager Health, Safety, Environment & Community, whom many of you probably already know.

I would like to remind you all, once again, of my commitment to ensuring our community members remain informed about Todd Energy's operations. If you have any questions or concerns about our activities, please contact the community team on 0800 001 007.

And finally, the Todd Energy team wishes you and your families a happy and safe festive season.

Kind regards,

Mark



# Supporting the WISE Trust to deliver healthier homes across the region

The Waitara-based Waitara Initiatives Supporting Employment (WISE) Charitable Trust is an amazing local charity that aims to create employment and training opportunities in Taranaki to reduce the effects of poverty.

One of their recent initiatives is the Healthy Homes Programme, which focusses on making healthier and more energy efficient homes for families in the region. The Programme pilot, started in 2020, targeted the region's chronically ill children, with children who suffer from chronic respiratory illness referred to the Healthy Homes team by the Taranaki District Health Board and agencies such as Tui Ora. Once a family is signed on, a certified inspector completes a thorough assessment of the house to understand issues contributing to the child's health problems.

"We spend time with the family building a relationship, understanding their concerns and the limitations they're faced with when providing a home for their tamariki," says WISE General Manager, Paul Scouller.

"We focus on building a trust relationship, understanding how living in an unhealthy home is affecting them, and most importantly, finding ways we can help."

The next step is the installation of two Monkeytronics Temperature & Humidity Sensors in the sick child's room and another room in the house, usually the lounge.

"These amazing devices send us continuous information about a room's temperature and humidity and help us understand issues that may be making a child sick. Some of the room conditions we record are horrendous, with kids' rooms getting down to seven degrees at night; 13 degrees less than the recommended minimum nighttime room temperature. It's no wonder these kids are getting sick," says Paul.

Using the information from the home assessment, whānau discussions and Monkeytronics, the Healthy Homes Team formulates a plan to make the home healthier.

"We have a set budget for each home," says Paul, "and we use all the information we have to formulate a plan to best utilise that budget to make a home healthier. This may involve new thermal-backed curtains, heaters, carpet, and draught stoppers. It may also include things like installing outside clotheslines so that clothes aren't dried inside, which releases a lot of water into the home environment."

In its first year, the Healthy Homes pilot helped remediate 11 homes housing chronically ill children.

"We have been thrilled with the result of the pilot," says Paul.

"We've learnt a lot of lessons along the way, including how important it is to engage with caregivers and really build a trust relationship with them. We've realised that though we get referred to help one sick child, by making a home healthier, we are in fact helping an entire family. It's unbelievable to see the horrible conditions some children must live in and the difference our remediation can make to a family's life."

With the pilot now completed, Todd will support the continuation of the Healthy Homes Programme, funding the remediation of approximately 10 homes per year for the next three years.

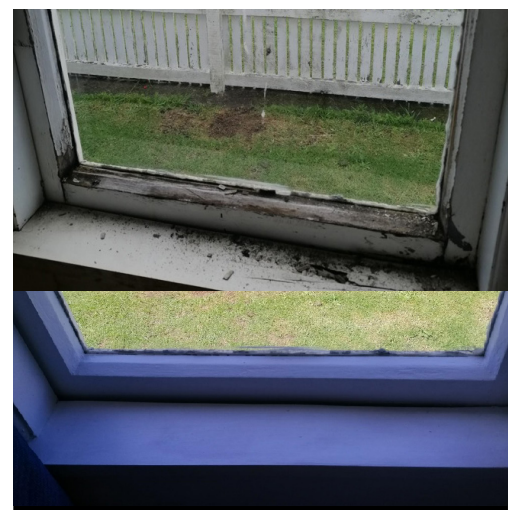
"We think this is an amazing initiative, and we are delighted to support the expansion of the Healthy Homes Programme across the region for the coming years," says Evelien Wallace, Todd Environment and Community.

"Paul and the team at WISE are making an incredible impact on the health of our community's children and we look forward to walking this journey with them."

If you want to get involved with WISE's work, or support in any way, please visit [www.WISE.org.nz](http://www.WISE.org.nz).



Remediation of a sick child's bedroom. This child's family were referred to the Healthy Homes programme by the Taranaki District Health board.



Remediation of a mouldy windowsill in a sick child's bedroom, completed as part of WISE's Healthy Homes programme.



## Helping the Taranaki Surf Life Saving Rescue Squad to save lives

The Taranaki Surf Life Saving Rescue Squad is a team of 13 experienced volunteer lifeguards from across Taranaki who are selected to be part of a small team on call to the Police 24/7. They are a critical link in ensuring people stay safe in Taranaki's often rough waters and conduct technically difficult rescues, usually within 2 km distance from shore.

"We work alongside the Police, Rescue helicopter and the Coast Guard," says team manager, David Bentley. "Our operations are varied and can range from a simple paddler who can't make it back to shore to recovering deceased persons from the marine environment."

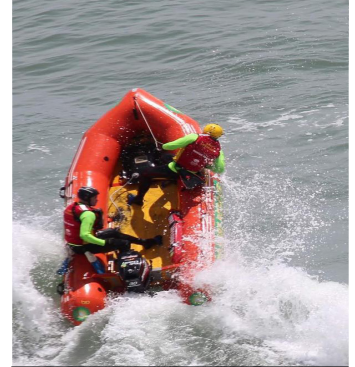
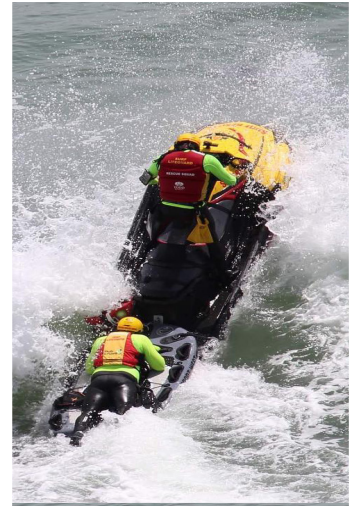
The team is based out of Port Taranaki and, to ensure a quick response to incidents around the region, has outstations in Waitara and Opunake. On average, the team is called out by the Police twice a month throughout the year, which increases to about once a week in summer.

To help support this team to keep the community safe, Todd has funded the purchase of a second jet ski to use as

a primary rescue craft. The older model, purchased a few years ago with support from Todd Energy, will be used as a backup and for training purposes.

"The funding has given us a great opportunity to respond to water rescues across Taranaki at speed, giving us a greater chance of making a difference in critical situations," says David.

"The Rescue Watercraft has been a great tool to help build public profile for the Rescue Squad and gives our younger, up-and-coming lifeguards something to aspire to in their personal development within surf lifesaving here in Taranaki."



The Todd Energy-sponsored Taranaki Surf Rescue Squad jet ski in action.

## Restoring and protecting the Kapuni Stream

The Kapuni Stream runs from Mount Taranaki southwards and enters the sea near Manaia. It generally has a high level of water clarity, great water quality and is home to a diverse range of aquatic species such as bully, kokopu, koura, inanga and longfin/shortfin eels. The Stream runs adjacent to our Kapuni operations and wellsites and the new Kapuni solar site.

In recent years Todd, together with the Taranaki Regional Council (TRC), iwi and hapū, and local schools and landowners, has worked to protect and enhance the Stream. This has included planting of stream margins, protecting adjoining bush blocks such as McDonalds Glenn near the Kapuni J wellsite, and weed and pest control. We also conduct annual fish and aquatic ecosystem surveys together with our site neighbour, Ballance.

A recent and ongoing project has been the restoration of large-scale erosion that happened at three Todd sites during July's large flood.

"Todd's initial response was to work closely with the TRC, experienced contractors and local iwi and hapū to undertake remediation as emergency works," says Nik Pyselman, Environment Manager at Todd.

"This consisted of bank trimming, exotic vegetation removal, and the removal of flood debris and gravel deposits from within the stream bed. Locally-sourced rock riprap was replaced within a high erosion area to protect water quality and Kapuni assets."

The next stage of work will include the remediation of a large, heavily eroded stream bank section upstream of the Skeet Road bridge adjoining the new Kapuni solar development.

"This work will require around 100 tonnes of locally-sourced riprap to remediate a roughly 70 m long erosion scarp and to protect the stream from receiving high sediment loads from this erosion," says Nik.

"This solution has also been developed in close partnership with the TRC and local iwi and hapū and will protect our new solar farm so it can keep on generating clean electricity well into the future."



Kapuni Stream restoration assessment with Ngāti Manuhiakai hapū, Ngāti Tu hapū and Te Korowai O Nga Ruahine.



Erosion at the Kapuni Stream, which will be repaired in the coming months using a joint stakeholder management approach.

## Todd's Low Emissions Future update

The second half of 2021 has seen a continuation of Todd's Low Emissions Future (LEF) programme, with Mike Brophy being appointed as Todd Energy's Emissions Reduction Lead. Mike is born and bred in Taranaki, growing up around the coast in Warea. He joined Todd five years ago after completing an Honours Degree in Chemical and Process Engineering, with a focus on renewable energies.

"I'm very excited to start in this new role," says Mike.

"I've been fortunate enough to gain exposure to, and build relationships in, many areas of Todd's business. Already there has been a fundamental shift in reviewing how projects may impact our emissions, with a great response from everyone I've worked with – people truly want to make a difference and make low emissions-based decisions wherever possible."

Since the inception of the LEF team in December 2020, Todd has made good progress and the initiative continues to gain momentum. "Todd's successes to date are mostly engineering-focused emission reductions at our production stations," says Mike. "These projects have reduced demands on fuel or flaring, thereby increasing plant efficiency and minimising unnecessary emissions."

This year's successes include the commissioning of the new Kapuni stabiliser, which utilises steam as a heating medium instead of combusted natural gas, and early indications are that this will reduce emissions by more than 4,500 tonnes of carbon dioxide equivalent (tCO<sub>2</sub>e) per year.

The key focus at McKee Mangahewa Production Station (MMPS) has been optimising compression. "Two of our largest compressors were reprogrammed to start-up sooner if they trip (stop running unexpectedly), which will reduce

emissions by nearly 500 tCO<sub>2</sub>e per year. The team working on this project has shown great initiative in reducing emissions as much as possible," says Mike.

As for next year's plans: the LEF team's focus for 2022 and beyond is to continue to identify opportunities and assist with their implementation – not just at Todd's production stations, but throughout the business – and to continue creating internal processes that will encourage future emission reduction opportunities. We already have a range of projects we wish to implement, and these are going through further evaluation now.

For more information on the work Todd's Low Emissions Future team is doing you can visit: [www.toddenergy.co.nz/?page\\_id=1410](http://www.toddenergy.co.nz/?page_id=1410)



The new KPS stabiliser which is expected to reduce emissions by at least 4,500 tCO<sub>2</sub>e per year.

## Keep New Zealand Beautiful Week roadside cleanup at Kapuni

To celebrate Keep NZ Beautiful Week, the Todd team in Kapuni recently conducted a roadside cleanup with 150 staff taking part.

Despite a slight delay due to weather, the team managed to gather up more than 15 bags of rubbish from Eltham, Skeet, Palmer, Lower Duthie and Ahipaipa Roads.

A massive thanks to the Kapuni Team, especially the Brownfield Project Team, who managed to get together 35 people to help out on the day.



Kapuni team members with rubbish collected along Palmer Road as part of Keep New Zealand Beautiful Week.

## Activity update

### McKee and Mangahewa Production Station (MMPS)

- *January – March:* Pressure equipment inspections
- *January – March:* Electrification Project ongoing
- *February – March:* Engine and compressor servicing
- *March:* McKee gas processing facility shutdown
- *February onwards:* Civil construction at MHW C and MHW D wellsites commencing
- *Ongoing:* Installation of powerline between MMPS and Mangahewa C site
- *Ongoing:* Civil construction work at Mangahewa G wellsite.

### McKee and Mangahewa wellsites

- *February – March:* McKee 10 abandonment at the McKee-D wellsite
- *March – ongoing:* Pouri-1 abandonment at Pouri-A wellsite

### Kapuni Gas Treatment Plant and Kapuni Production Station

- *December – March:* Ongoing work on Benfield Train 3 reinstatement
- *December onwards:* Normal operation will be commencing again, with two Benfield trains in service
- *March – April:* Restart of Benfield Train 3
- *January:* Compressor servicing

### Kapuni wellsites

- *September – March:* Kapuni J wellsite drilling and completion ongoing
- *December – February:* Wellhead Tree testing

All care has been taken to ensure this information is correct at the time of publication.

